

ICSV14
Cairns • Australia
9-12 July, 2007



TITLE OF THE PAPER — ICSV14 INSTRUCTIONS

Will Robertson, Mike Kidner

School of Mechanical Engineering
University of Adelaide, SA
Australia 5005
will@mecheng.adelaide.edu.au

Abstract

This document outlines the author instructions for ICSV14 papers produced with L^AT_EX. ICSV14 abstracts may be *no longer* than 300 words.

1. INTRODUCTION

This document contains all information you need to prepare your manuscript for ICSV14:

- Your complete paper must not exceed 8 pages (or 16 pages for keynote papers).
- All paper must be received as a PDF file no later than 31 March, 2007. In case of any problems in preparing a PDF file, please email the ICSV14 Technical Chair at: editor@icsv14.com
- All papers must be submitted in electronic form to the online paper submission website: <http://www.acoustics.asn.au/conference-papers/login.php> Please login with the User ID and Password that you received when submitting your abstract. In case of any problems submitting you paper, please email your paper to: editor@icsv14.com
- All papers must be submitted as a PDF file (limit of 2 MB).
- Please note that the official language of the ICSV14 is English.

In preparing your manuscript, the paper should start with the **Abstract**, followed by the main paper body beginning with an **INTRODUCTION**, as here.

2. AUTHOR INSTRUCTIONS

2.1. Proofreading

Proofread your manuscript carefully. You are responsible for proofreading and correcting your manuscript before submitting it for publication. There will be no further proofreading or opportunity for changes.

2.2. Equations

Every displayed equation should be numbered. Equation numbers should be right justified on the page and be numbered consecutively in arabic numerals (i.e., 1, 2, 3, . . .).

$$p(\mathbf{R}) = - \int_S \left(\frac{\partial g(|\mathbf{R} - \mathbf{R}_0|)}{\partial \xi} + \rho \ddot{u} g(|\mathbf{R} - \mathbf{R}_0|) \right) dS(\mathbf{R}_0) \quad (1)$$

$$g(|\mathbf{R} - \mathbf{R}_0|) = \frac{-e^{jk_f|\mathbf{R} - \mathbf{R}_0|}}{4\pi|\mathbf{R} - \mathbf{R}_0|} \quad (2)$$

Please use the `amsmath` package (loaded automatically) to typeset more complicated mathematics. In particular, please avoid the `eqnarray` environment.

2.3. Units

The use of SI units is strongly recommended and mixed units are to be avoided. Interested `LATEX` users may wish to use the `Slstyle` package for their convenience.

2.4. Tables

Tables should be framed. Table captions should always be positioned *above* the tables. See Table 1 for an example. Floating environments (including figures, see below) are configured automatically to try to be placed inline, at the top or bottom of the next available page, or on a page of their own. (Corresponding to the `[htbp]` `LATEX` table/figure environment option.)

Table 1. Cylindrical hull parameters.

Parameter	Value
diameter, d (m)	6.5
thickness, h (mm)	45
length, L (m)	45
Young's modulus, E (GPa)	200
density, ρ (kg/m ³)	200
Poisson's ratio, ν	0.3

2.5. Figures

All figures must be individually numbered and captioned. Illustrations must be sharp and clear, including any lettering on the figures. Figure captions should always be positioned *below* the figure or photograph. An example is shown in Figure 1.

2.5.1. Photographs

Ensure that photographs included in the paper are sufficiently low resolution, as a single unprocessed image from a modern digital camera can be greater in size than the entire allowed size of the PDF document. Downscaling the image must be done in an external program.

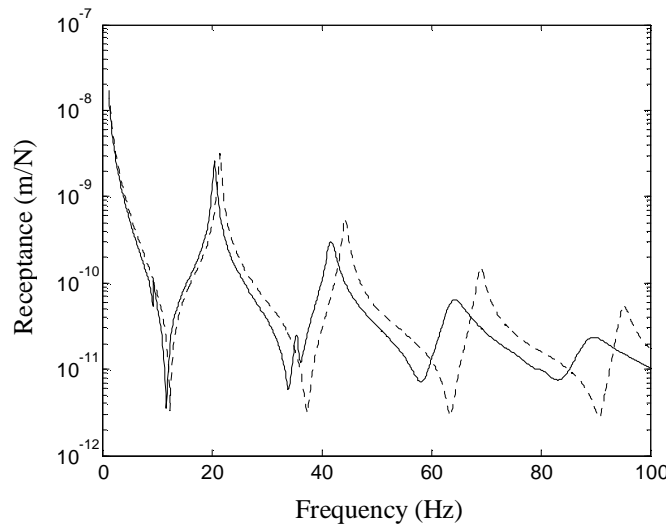


Figure 1. Drive point receptance: cylindrical shell model (—) and 1-D rod model (- - -).

2.5.2. Illustrations

Ensure that illustrations are sized correctly to have a font size approximately matching the body text of the document. The use of a vector format (PDF or EPS output) will ensure that line art is high quality and low in file size. The illustrations and captions should be legible without turning the manuscript 90 degrees.

2.6. References

All references should appear at the end of the paper. An example of the proper format for references is given below (although authors will generally wish to use Bib \TeX for automatic bibliography creation rather than the manual bibliography created at the end of this document). The title of the journal, book or conference proceedings should be in italics. The volume number of a journal paper (i.e., 25 in the first example below) should be printed using a boldface font. (Most \LaTeX bibliography styles follow these conventions.)

For citations are to be numbered in order of their appearance in the text and be surrounded by square brackets: [1], [2]. Citations should **not** be used as objects in a sentence; rather than “In [3], a topic was discussed”, write “Another topic was discussed by Campos [4]”.

3. TYPESETTING

The `icsv14` class formats the document appropriately for this conference proceedings. By following the example of this document, it is simple to adhere to the formatting instructions.

3.1. Page layout

The page layout is:

- A4-sized paper (210 mm \times 297 mm).
- A top margin of 28 mm.
- A bottom, left, and right margins of 25 mm.

- The text has both the left and right margins justified.

Paragraphs directly following section headers are not indented. There is no inter-paragraph spacing, and the paragraph indent is 10 mm.

3.2. Fonts

The document font is ‘Times’ at 12 pt with a 15.4 pt distance between successive lines of text. The title of the paper is centred, uppercase, and bold, at 15 pt. Figure and table captions are set in 11 pt. Sections headings are centred, uppercase, and bold at 13 pt. Sub-section headings are flush left in bold at 12 pt, and sub-subsection headings flush left in italic at 12 pt. The references list may be set in either 10 pt or 11 pt depending on spacing requirements.

4. OTHER IMPORTANT INFORMATION

Final Acceptance The Congress Scientific Committee has the right to reject papers considered inappropriate to the Proceedings, even if the abstract originally appeared to be acceptable.

Plenary Keynote Papers The presentation time for Plenary Keynote Addresses will be 40 minutes including a period reserved for questions and debate.

Invited and Contributed Papers Each presentation will be **20 minutes** in total (**15 minutes for the presentation**, 3 minutes for questions and 2 minutes for changeover). Make sure that you are able to stay within these time limits.

At least one presenter/author of a paper must register for the Congress by 15 April, 2007. Please note that the registration fee entitles you only to one paper presentation. Additional presentations are each charged an ‘extra paper fee’ of AUD \$150.

Please note that the final acceptance of your paper is subject to review by the ICSV14 Scientific Committee and to the receipt of the corresponding registration fee by the ICSV14 Congress Secretariat.

REFERENCES

- [1] K.U. Ingard, “On the theory and design of acoustic resonators”, *Journal of the Acoustical Society of America* **25**, 1037-1067(1953).
- [2] A.W. Leissa, *Vibration of shells*, American Institute of Physics, Woodbury, New York, 1993.
- [3] L. Pan, N. Farag, T. Lin and R. Juniper, “Propeller induced structural vibration through the thrust bearing”, *Proceedings of Acoustics 2002*, Adelaide, Australia, 13-15 November 2002, pp. 390-399.
- [4] L.M.B.C. Campos and J.M.G.S. Oliveira, “On sound generation in cylindrical nozzles with non-uniform impedance”, *Proceedings of the Twelfth International Congress on Sound and Vibration (ICSV12)*, 11-14 July 2005, Lisbon, Portugal.